

WGS 84 POSITIONS can be plotted directly on this chart

Humber Entrance

ANNUAL SURVEY 2014
DEPTHS IN METRES
SCALE 1 : 12 500

SURVEYED BY
Harbour Master, Humber
ASSOCIATED BRITISH PORTS
2nd February to 1st June 2015
Inspection Survey 20th and 22nd June 2017

Depths are in metres and decimetres reduced to the chart datum given below
Underlined figures are drying heights in metres and decimetres above chart datum
Overhead clearance heights are above Highest Astronomical Tide
TIDAL LEVEL AND CHART DATUM

SATELLITE-DERIVED POSITIONS

Positions obtained from satellite navigation systems, such as the Global Positioning System (GPS), are normally referred to the World Geodetic System 1984 Datum. Such positions can be plotted directly on this chart.

NATIONAL HORIZONTAL DATUM

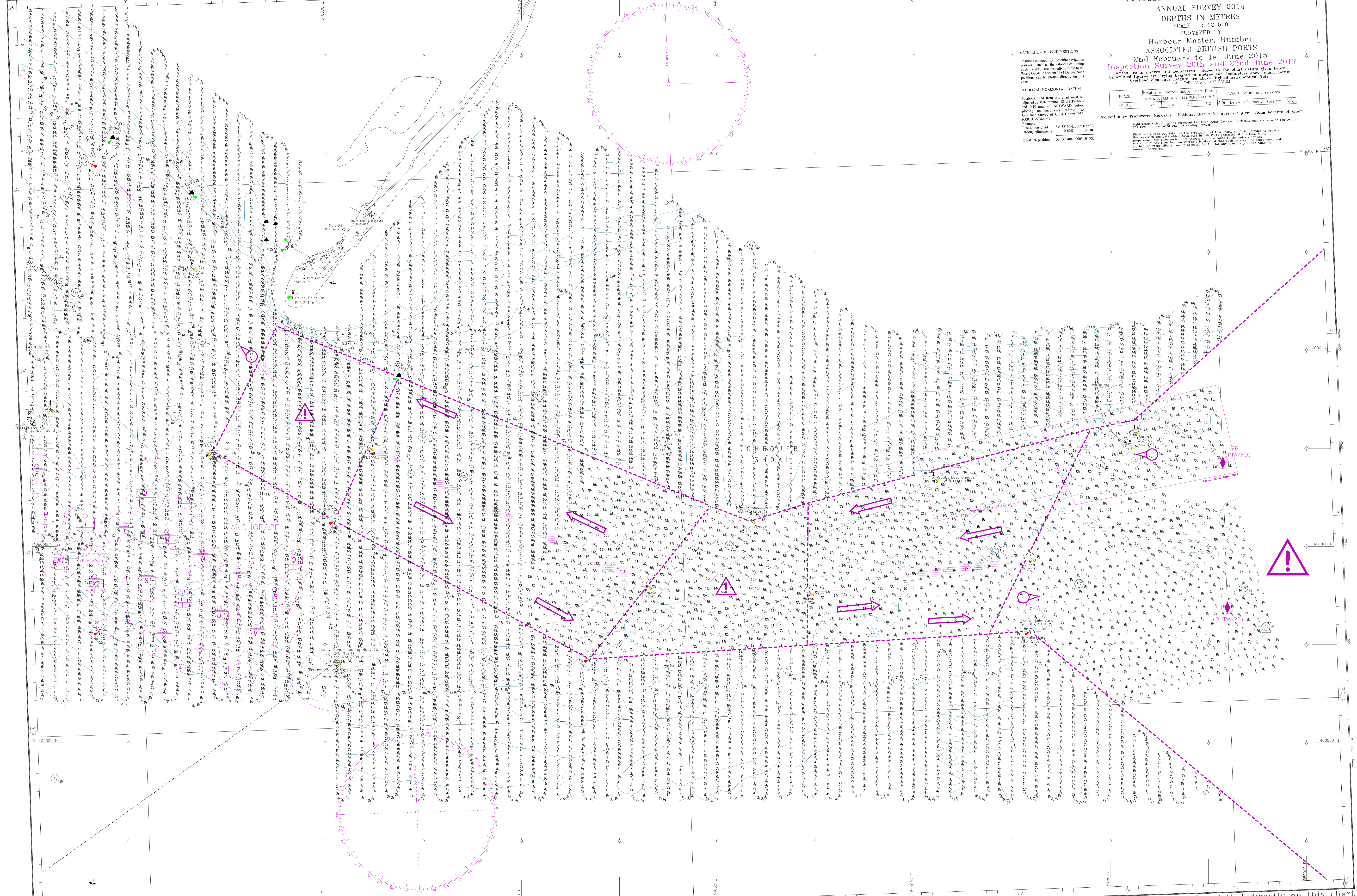
Positions read from this chart must be adjusted by 0.2 metres NORTHWARD and 0.10 metres EASTWARD before plotting on documents referred to in the Chart.

Example: 53°32'40.000" 00' 10.00E
lat/long adjustments 0.20S 0.10E
OSGR 16 position 53°32'48N, 00°10'40E

PLACE	Heights in metres above Chart Datum		Chart Datum and remarks
	M.H.W.S.	M.L.W.S.	
SPURN	6.9	5.5	2.7 1.2 3.9m below O.D. Newlyn (approx. LAT.)

Projection: Transverse Mercator. National Grid references are given along borders of chart.

Light stars without legends represent day beacons. Lighted stars are shown as red to port and green to starboard. Lighted stars with legends represent day beacons. Lighted stars with legends represent day beacons. Lighted stars with legends represent day beacons.



WGS 84 POSITIONS can be plotted directly on this chart

WGS 84 POSITIONS can be plotted directly on this chart